

TestDirector

Rational ClearQuest Add-in Guide
External Tracking Tool Integration
Version 8.0

TestDirector Rational ClearQuest Add-in Guide, External Tracking Tool Integration, Version 8.0

This manual, and the accompanying software and other documentation, is protected by U.S. and international copyright laws, and may be used only in accordance with the accompanying license agreement. Features of the software, and of other products and services of Mercury Interactive Corporation, may be covered by one or more of the following patents: U.S. Patent Nos. 5,701,139; 5,657,438; 5,511,185; 5,870,559; 5,958,008; 5,974,572; 6,138,157; 6,144,962; 6,205,122; 6,237,006; 6,341,310; 6,360,332, 6,449,739; 6,470,383; 6,477,483; 6,549,944; 6,560,564; and 6,564,342. Other patents pending. All rights reserved.

ActiveTest, ActiveTune, Astra, FastTrack, Global SiteReliance, LoadRunner, Mercury, Mercury Interactive, the Mercury Interactive logo, Open Test Architecture, Optane, POPs on Demand, ProTune, QuickTest, RapidTest, SiteReliance, SiteRunner, SiteScope, SiteSeer, TestCenter, TestDirector, TestSuite, Topaz, Topaz AIMS, Topaz Business Process Monitor, Topaz Client Monitor, Topaz Console, Topaz Delta, Topaz Diagnostics, Topaz Global Monitor, Topaz Managed Services, Topaz Open DataSource, Topaz Real User Monitor, Topaz WeatherMap, TurboLoad, Twinlook, Visual Testing, Visual Web Display, WebTest, WebTrace, WinRunner and XRunner are trademarks or registered trademarks of Mercury Interactive Corporation or its wholly owned subsidiary Mercury Interactive (Israel) Ltd. in the United States and/or other countries.

All other company, brand and product names are registered trademarks or trademarks of their respective holders. Mercury Interactive Corporation disclaims any responsibility for specifying which marks are owned by which companies or which organizations.

Mercury Interactive Corporation
1325 Borregas Avenue
Sunnyvale, CA 94089 USA
Tel: (408) 822-5200
Toll Free: (800) TEST-911, (866) TOPAZ-4U
Fax: (408) 822-5300

© 2003 Mercury Interactive Corporation, All rights reserved

If you have any comments or suggestions regarding this document, please send them via e-mail to documentation@merc-int.com.

Table of Contents

Welcome to the TestDirector Rational ClearQuest External Tracking Tool Add-in	v
Using This Guide	vi
Documentation Updates	vi
Typographical Conventions.....	vii
Chapter 1: Installing the Rational ClearQuest ETT Add-in	1
Chapter 2: Setting Up ETT	3
Chapter 3: Working with ETT	7
Linking to ETT	7
Using ETT from the Common TestDirector Toolbar	9
Using ETT from the Manual Runner.....	11

Welcome to the TestDirector Rational ClearQuest External Tracking Tool Add-in

Welcome to the TestDirector Rational ClearQuest Add-in for External Tracking Tools (*ETT*). ETT is part of TestDirector, enabling you to use TestDirector's capabilities with other defect tracking applications. You work in the native TestDirector environment, while the defect submitting process is forwarded to the external tracking tool, Rational ClearQuest.

This add-in supports Rational ClearQuest 2002 with TestDirector 8.0 Enterprise Edition.

When you enable ETT, TestDirector replaces the standard Add Defect dialog box with the respective ETT submit defect dialog box. This means that when you add a defect in TestDirector, you are actually submitting it to the external project.

To preserve the normal workflow and make the defect-tracking systems switch as smoothly as possible, ETT uses a compatibility mechanism, called *mapping*, which associates TestDirector's fields to the corresponding external ClearQuest fields.

Note: This guide explains how to use the Rational ClearQuest External Tracking Tool with TestDirector. For additional information on using TestDirector, refer to the *TestDirector User's Guide*.

Using This Guide

This guide contains three chapters:

Chapter 1 Installing the Rational ClearQuest ETT Add-in

Describes how to install ETT on your TestDirector server machine.

Chapter 2 Setting Up ETT

Describes how to set up ETT using the Configuration Tool.

Chapter 3 Working with ETT

Describes how to use TestDirector with ETT enabled.

Documentation Updates

Mercury Interactive is continuously updating its product documentation with new information. You can download the latest version of this document from the Customer Support Web site (<http://support.mercuryinteractive.com>).

To download updated documentation:

- 1** In the Customer Support Web site, click the **Documentation** link.
- 2** Under **Select Product Name**, select TestDirector.

Note that if TestDirector does not appear in the list, you must add it to your customer profile. Click **My Account** to update your profile.
- 3** Click **Retrieve**. The Documentation page opens and lists the documentation available for the current release and for previous releases. If a document was recently updated, **Updated** appears next to the document name.
- 4** Click a document link to download the documentation.

Typographical Conventions

This book uses the following typographical conventions:

1, 2, 3	Bold numbers indicate steps in a procedure.
►	Bullets indicate options and features.
>	The greater than sign separates menu levels (for example, File > Open).
Bold	Bold text indicates function names.
<i>Italics</i>	<i>Italic</i> text indicates variable names, or introduces a new term.
Arial	The Arial font is used for examples and statements that are to be typed in literally.

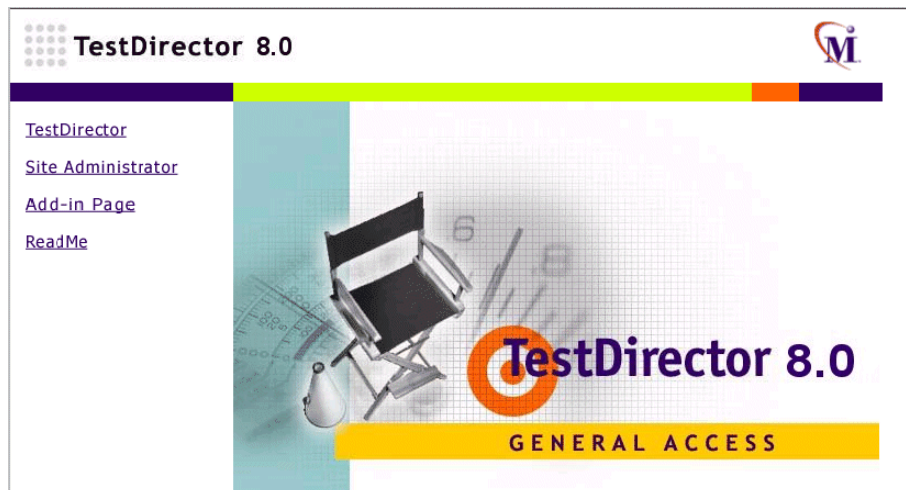
1

Installing the Rational ClearQuest ETT Add-in

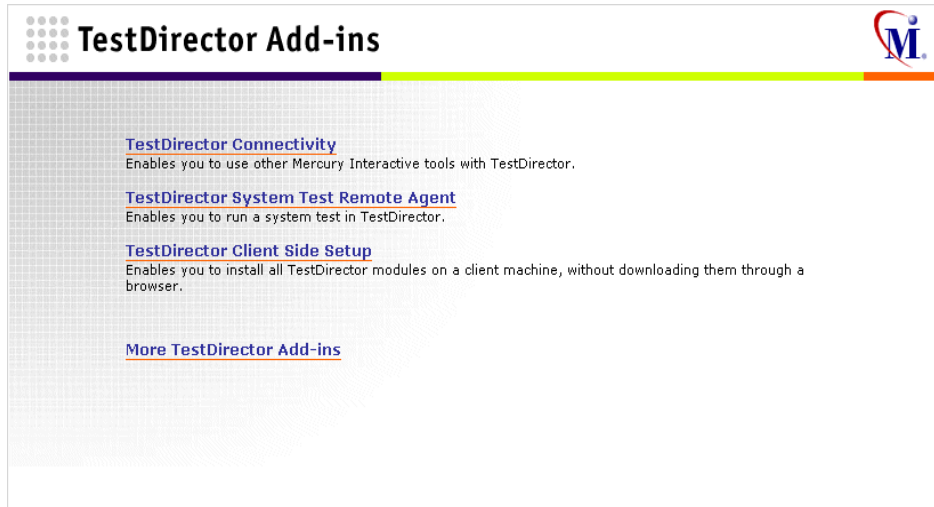
This chapter describes how to install the Rational ClearQuest ETT Add-in. Note that to install this add-in, you must log in with administrator privileges.

To install the Rational ClearQuest ETT Add-in:

- 1 Install Rational ClearQuest on your TestDirector server machine.
- 2 Uninstall any previous versions of the TestDirector Rational ClearQuest ETT Add-in. To uninstall, choose **Start > Settings > Control Panel > Add/Remove Programs** and follow the instructions on your screen.
- 3 Open your Web browser and type your TestDirector URL:
`http://<TestDirector server name>/<virtual directory name>/default.htm`
The TestDirector Options window opens.



- 4 Click the **Add-ins Page** link. The TestDirector Add-ins page opens.



- 5 Click the **More TestDirector Add-ins** link. The More TestDirector Add-ins page opens.
- 6 Under **External Tracking Tool Add-ins**, click the **Rational ClearQuest External Tracking Tool Add-in** link. The Rational ClearQuest External Tracking Tool Add-in page opens.
- 7 Click the **Download Add-in** link. Follow the on-screen installation instructions.

2

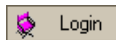
Setting Up ETT

As the administrator, you set up ETT using the Configuration Tool. Setting up ETT involves two steps:

- ▶ Enabling ETT for a selected Server.
- ▶ Mapping TestDirector fields to their corresponding ETT fields.

To set up ETT:

- 1** Choose **Start > TestDirector 8.0 > Integrations > Ett > Configuration Tool**. The TestDirector External Tracking Tools Configuration Tool window opens.



- 2** Click the **Login** button. The Login to TestDirector dialog box opens.

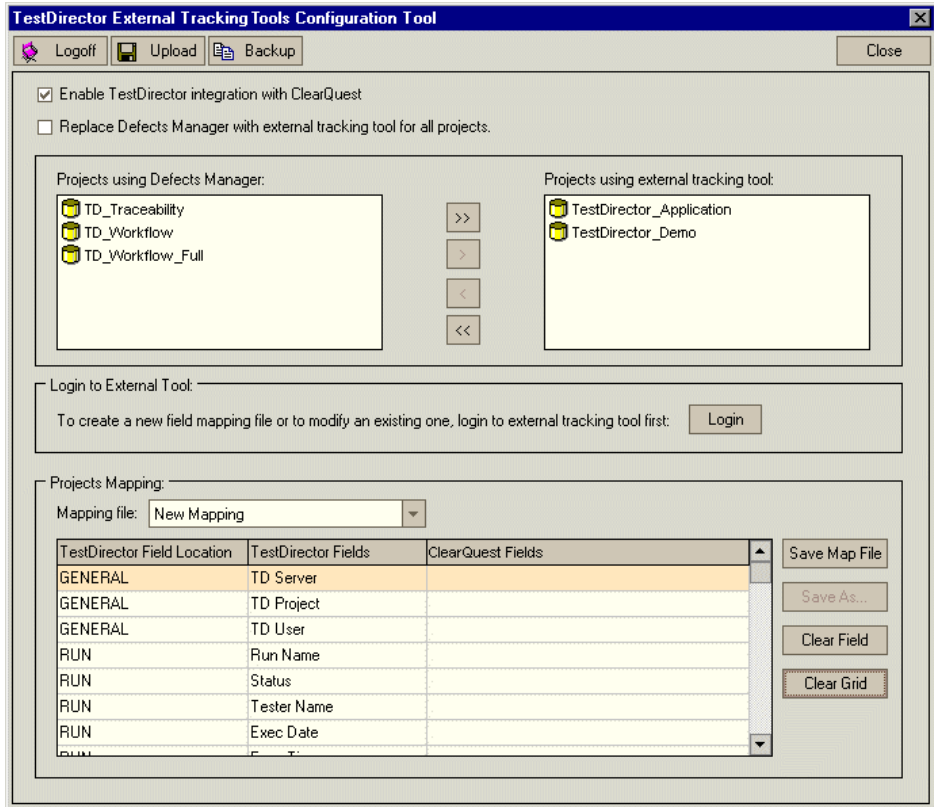
A screenshot of the "Login to TestDirector" dialog box. It has a title bar with "Login to TestDirector" and a close button. The dialog is divided into two sections. The first section, "Connect to TestDirector Server", contains a "Server Name:" text box with "localhost" entered and a "Disconnect" button with a purple icon. The second section, "Connect to TestDirector Project", contains a "Domain Name:" dropdown menu with "DEFAULT" selected, a "Project Name:" dropdown menu with "TestDirector_Demo" selected, a "User Name:" text box with "admin" entered, and a "User Password:" text box. To the right of these fields is a "Connect" button with a yellow icon. At the bottom center of the dialog is a "Cancel" button.

- 3** In **Server Name**, accept the default TestDirector server name. Alternatively, type the TestDirector Server name or TestDirector Server URL. Click **Connect** to connect to the server and retrieve its projects.

- 4 In **Domain Name**, select a domain.
- 5 In **Project Name**, select a TestDirector project.
- 6 In **User Name**, type the administrator name and the corresponding **User Password** if required.



- 7 Click **Connect** to connect to the project. The main Configuration Tool dialog box opens.

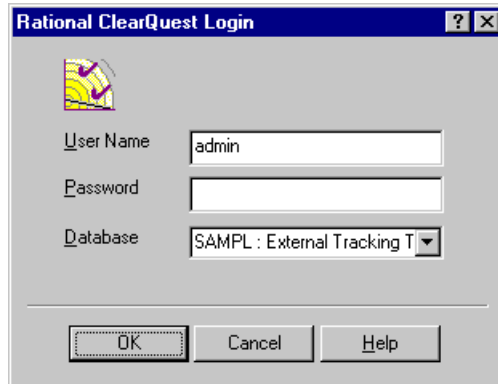


- 8 Select **Enable TestDirector integration with ClearQuest** to enable TestDirector to work with Rational ClearQuest ETT projects.
- 9 To instruct TestDirector to use ETT for all projects on the current server, select **Replace Defects Manager with external tracking tool for all projects**.

- 10** To instruct TestDirector to use ETT for a specific project, choose a project name and click the arrow buttons (> and <) to move a name between **Projects using Defects Manager** and **Projects using external tracking tool**. Click the double arrow buttons (>> and <<) to move all the names from one list to the other.

Login

- 11** After you enable ETT, click the **Login** button. The Rational ClearQuest Login dialog box opens.



- 12** Log in to the external project and click **OK** to retrieve the list of external fields.
- 13** In the mapping grid of the main Configuration Tool dialog box, under **ClearQuest Fields**, select a ClearQuest field to map to the corresponding TestDirector field. Note that you can map each ClearQuest field only once.

Note: It is recommended that you map the following TestDirector fields to user-defined fields you create in ClearQuest: (RUN)Run Name, (STEP)Step Name, (STEP)Description, (STEP)Expected, (STEP)Actual, (TEST)Test Name, (TESTSET)TestSet Name.

Each TestDirector field in the mapping grid is grouped according to the following predefined **TestDirector Field Location** types:

- **GENERAL:** Fields that contain common information about the TestDirector environment, such as the current TestDirector Server name

(TD Server), TestDirector project name (TD Project) and the user currently logged in (TD User).

- **RUN:** Fields which contain information about the current run.
- **TEST:** Fields which contain information about the current test.
- **TESTSET:** Fields which contain information about the current test set.
- **STEP:** Fields which contain information about the test step currently executed.

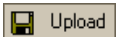
- 14** Click **Save As** to save a local copy of the mappings. The Create a New Mapping dialog box opens.

Type a unique mapping file name. Note that each mapping is saved as a separate file in the ETT settings in order to allow for multiple mapping variants.

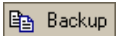
Click **OK** to save the mapping file.

- 15** To save the existing mapping file, click the **Save Map File** button.
- 16** To save the mapping file with a new name or create a new mapping file, click **Save As**.
- 17** To clear a mapping entry in the grid, click **Clear**. To clear all entries in the grid, click **Clear Grid**.

Note: Saving an empty mapping grid deletes the mapping file.



- 18** Click **Upload** to save the mapping file to the TestDirector Server. Click **OK** to confirm.



- 19** You can back up the mapping file, saved as **ETT.ini**, to a different location. This is useful, for example, if you uninstall TestDirector as the **ETT.ini** file is saved in the TestDirector virtual directory which is deleted when you uninstall. Click **Backup** to back up the mapping file.
- 20** Click **Close** to exit the Configuration Tool or click **Logoff** to log off and then log in to a different project.

3

Working with ETT

After you set up ETT, as described in Chapter 2, “Setting Up ETT”, you can start working in TestDirector using ETT. You use the ETT integration when you submit a defect from the common TestDirector toolbar or from the Manual Runner.

This chapter describes:

- Linking to ETT
- Using ETT from the Common TestDirector Toolbar
- Using ETT from the Manual Runner

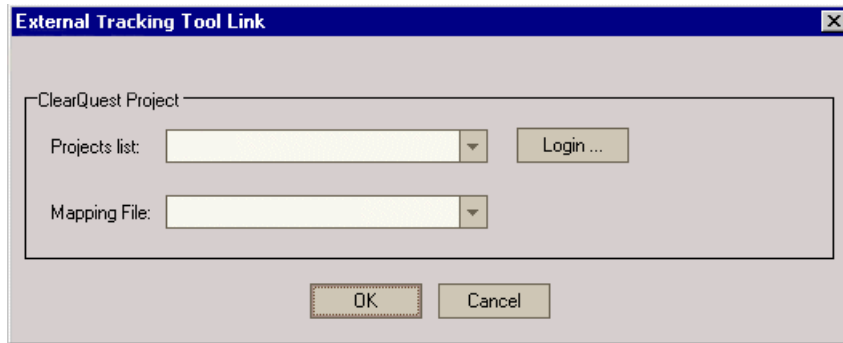
Linking to ETT

The first time you use TestDirector with ETT, you must create a link between the ETT project you are integrating with and the TestDirector project on which you are working.

To link to ETT:



- 1** In the common TestDirector toolbar, click the **External Tracking Tool Settings** button. The External Tracking Tool Link dialog box opens.



- 2** In **Projects list**, select the ETT project to which you want to link.
- 3** Click **Login** and log in to the project.
- 4** Select a **Mapping File**. For more information on creating a mapping file, see Chapter 2, "Setting Up ETT."
- 5** Click **OK**. Your TestDirector project is now linked to your ETT project.

Using ETT from the Common TestDirector Toolbar

You can submit a defect using ETT from the common TestDirector toolbar.

To submit a defect from the common TestDirector toolbar:



- 1 In the common TestDirector toolbar, click the **Add Defect** button. The Rational ClearQuest Login dialog box opens.

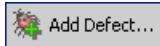
Rational ClearQuest Login

User Name: admin

Password:

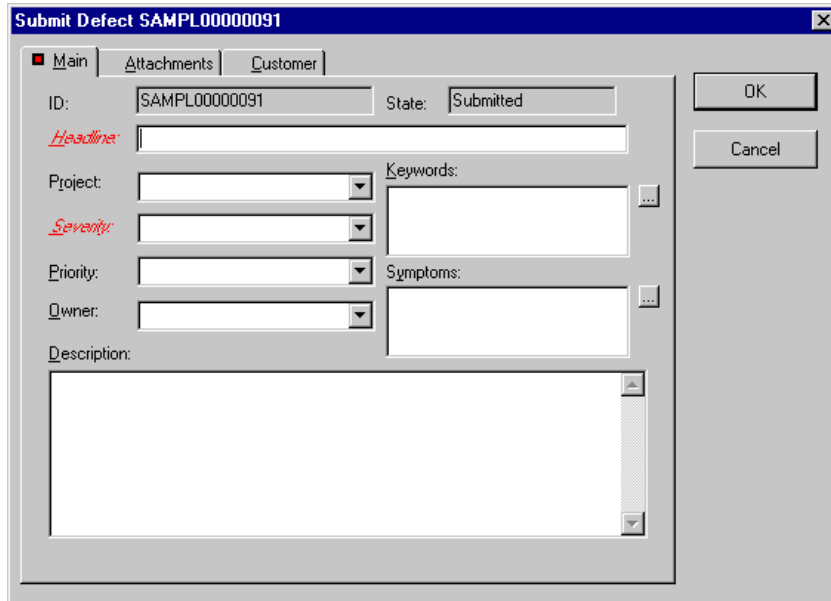
Database: SAMPL : External Tracking T

OK Cancel Help



Note: If you click the **Add Defect** button in the Defects module toolbar, the TestDirector Add Defect dialog box opens. To work with ETT, you must click the **Add Defect** button in the common TestDirector toolbar.

- 2 Log in and click **OK**. The Submit Defect dialog box opens.



By default, this dialog box displays the settings you defined in the mapping file for **GENERAL**.

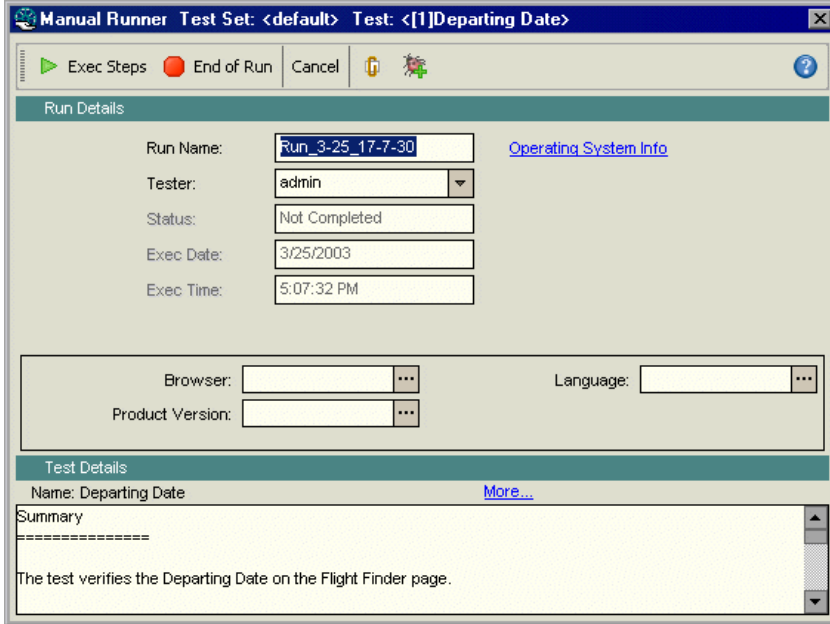
- 3 Enter the relevant information and click **OK**. The defect is stored in the ETT project to which your TestDirector project is linked.

Using ETT from the Manual Runner



You can submit a defect using ETT from the Manual Runner.

To submit a defect from the Manual Runner:

- 1 In the Test Lab module, select a manual test and click **Run**. The Manual Runner dialog box opens.



Manual Runner Test Set: <default> Test: <[1]Departing Date>

Exec Steps End of Run Cancel  

Run Details

Run Name: [Operating System Info](#)

Tester:

Status:

Exec Date:

Exec Time:

Browser: ... Language: ...

Product Version: ...

Test Details

Name: Departing Date [More...](#)

Summary

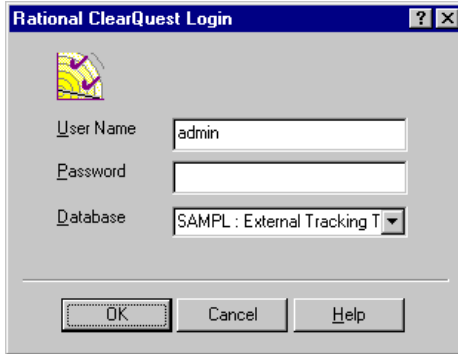
=====

The test verifies the Departing Date on the Flight Finder page.

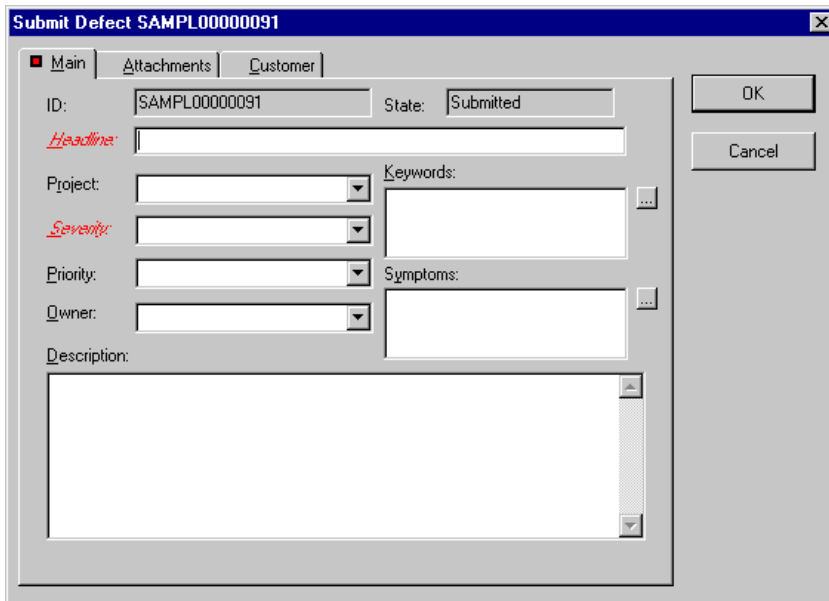


- 2 Click the **Add Defect** button. Note that you can submit a defect before you run the test or during the test run.

The Rational ClearQuest Login dialog box opens.



3 Log in and click **OK**. The Submit Defect dialog box opens.



By default, this dialog box displays the settings you defined in the mapping file for GENERAL, RUN, TEST, TESTSET, and STEP.

4 Enter the relevant information and click **OK**. The defect is stored in the ETT project to which your TestDirector project is linked.



Mercury Interactive Corporation

1325 Borregas Avenue
Sunnyvale, CA 94089 USA

Main Telephone: (408) 822-5200

Sales & Information: (800) TEST-911, (866) TOPAZ-4U

Customer Support: (877) TEST-HLP

Fax: (408) 822-5300

Home Page: www.mercuryinteractive.com

Customer Support: support.mercuryinteractive.com