

TestDirector

SiteScope Add-in Installation Guide

Version 8.0

TestDirector SiteScope Add-in Installation Guide, Version 8.0

This manual, and the accompanying software and other documentation, is protected by U.S. and international copyright laws, and may be used only in accordance with the accompanying license agreement. Features of the software, and of other products and services of Mercury Interactive Corporation, may be covered by one or more of the following patents: U.S. Patent Nos. 5,701,139; 5,657,438; 5,511,185; 5,870,559; 5,958,008; 5,974,572; 6,138,157; 6,144,962; 6,205,122; 6,237,006; 6,341,310; 6,360,332, 6,449,739; 6,470,383; 6,477,483; 6,549,944; 6,560,564; and 6,564,342. Other patents pending. All rights reserved.

ActiveTest, ActiveTune, Astra, FastTrack, Global SiteReliance, LoadRunner, Mercury, Mercury Interactive, the Mercury Interactive logo, Open Test Architecture, Optane, POPs on Demand, ProTune, QuickTest, RapidTest, SiteReliance, SiteRunner, SiteScope, SiteSeer, TestCenter, TestDirector, TestSuite, Topaz, Topaz AIMS, Topaz Business Process Monitor, Topaz Client Monitor, Topaz Console, Topaz Delta, Topaz Diagnostics, Topaz Global Monitor, Topaz Managed Services, Topaz Open DataSource, Topaz Real User Monitor, Topaz WeatherMap, TurboLoad, Twinlook, Visual Testing, Visual Web Display, WebTest, WebTrace, WinRunner and XRunner are trademarks or registered trademarks of Mercury Interactive Corporation or its wholly owned subsidiary Mercury Interactive (Israel) Ltd. in the United States and/or other countries.

All other company, brand and product names are registered trademarks or trademarks of their respective holders. Mercury Interactive Corporation disclaims any responsibility for specifying which marks are owned by which companies or which organizations.

Mercury Interactive Corporation
1325 Borregas Avenue
Sunnyvale, CA 94089 USA
Tel: (408) 822-5200
Toll Free: (800) TEST-911, (866) TOPAZ-4U
Fax: (408) 822-5300

© 2003 Mercury Interactive Corporation, All rights reserved

If you have any comments or suggestions regarding this document, please send them via e-mail to documentation@merc-int.com.

Installing the TestDirector SiteScope Add-in

Welcome to the TestDirector SiteScope Add-in, Mercury Interactive's solution for monitoring Web, network and system performance. By using SiteScope, you can make sure that your TestDirector server is available at all times and free of any performance problems. You can monitor system metrics, such as CPU utilization, disk space, and memory usage.

This guide explains how to install and uninstall SiteScope 7.6 on your TestDirector server machine. The TestDirector SiteScope Add-in supports TestDirector 8.0 Enterprise Edition.

Known problem: If you define additional monitors or add groups to SiteScope and then uninstall TestDirector, your changes will not be saved. When you reinstall TestDirector, the default SiteScope settings are applied.

Workaround: Before you uninstall TestDirector, copy the **SiteScope** folder from ...**Inetpub****TDBIN** to another directory. After you reinstall TestDirector, copy the **SiteScope** folder back to the ...**Inetpub****TDBIN** directory.

Known problem: If you uninstall SiteScope and then try to reinstall SiteScope manually, the installation will fail despite the success message that displays.

Workaround: Before you reinstall SiteScope manually, delete the **SiteScope** folder, located in ...**Inetpub****TDBIN****SiteScope**.

This guide includes the following sections:

- Documentation Updates
- Installing SiteScope
- Starting SiteScope
- Uninstalling SiteScope

Documentation Updates

Mercury Interactive is continuously updating its product documentation with new information. You can download the latest version of this document from the Customer Support Web site (<http://support.mercuryinteractive.com>).

To download updated documentation:

- 1** In the Customer Support Web site, click the **Documentation** link.
- 2** Under **Select Product Name**, select TestDirector.

Note that if TestDirector does not appear in the list, you must add it to your customer profile. Click **My Account** to update your profile.

- 3** Click **Retrieve**. The Documentation page opens and lists the documentation available for the current release and for previous releases. If a document was recently updated, **Updated** appears next to the document name.
- 4** Click a document link to download the documentation.

Installing SiteScope

You can install SiteScope automatically during the TestDirector installation process on your server machine or you can install it manually after the installation process. Note that to install this add-in, you must log in with administrator privileges.

Note: You must first uninstall previous versions of the SiteScope Add-in. For more information, see “Uninstalling SiteScope” on page 7.

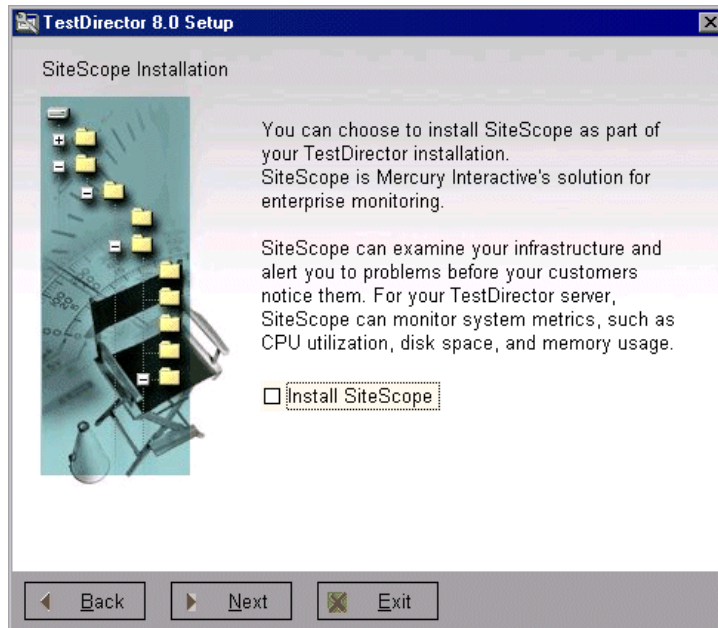
Installing SiteScope Automatically

You can instruct TestDirector to install SiteScope automatically when you install TestDirector on your server machine. For more information, refer to the *TestDirector Installation Guide*.

To install SiteScope automatically:

- 1 Insert the TestDirector CD-ROM into the CD-ROM drive. The TestDirector 8.0 Setup window opens. Follow the instructions on your screen.

- 2 In the SiteScope Installation dialog box, select **Install SiteScope** to install SiteScope.



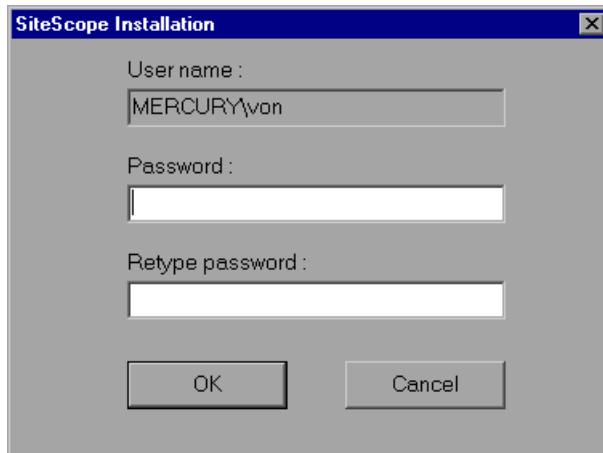
- 3 Click **Next** to continue the TestDirector installation process.

Installing SiteScope Manually

You can install SiteScope manually after the TestDirector installation process.

To install SiteScope manually:

- 1 On your TestDirector server machine, locate the following directory:
\\...\InetPub\TDBIN\ReDist\SiteScope.
- 2 Run **SScope.exe**. The SiteScope Installation dialog box opens.

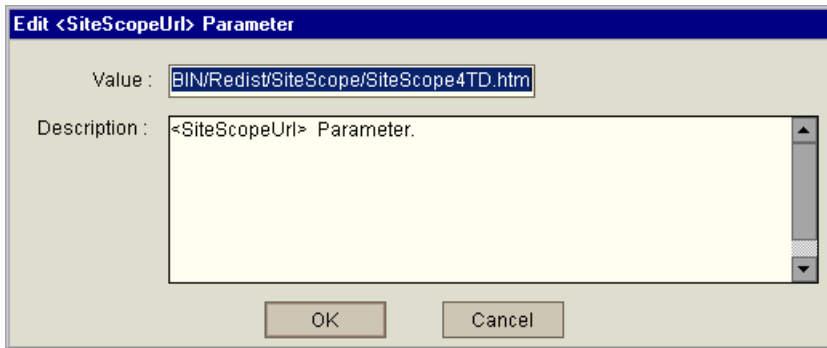



- 3 In the **Password** box, type the same password you used during your TestDirector installation for setting it as a service.

For more information on setting TestDirector as a service, refer to the *TestDirector Installation Guide*.

- 4 In the **Retype password** box, retype your password. Click **OK**.
- 5 Open the **SiteScope4TD.ini** file. Under the **[SiteScope]** section, copy the URL.
- 6 Open the Site Administrator and click the **Site Config** tab.

- 7 Double-click the **SiteScopeUrl** parameter. The Edit <SiteScopeUrl> Parameter dialog box opens.



- 8 In the **Value** box, paste the URL you copied from the **SiteScope4TD.ini** file. Click **OK**.
- 9 Log off from the Site Administrator
- 10 In the system tray, right-click the TestDirector icon  and choose **Stop TestDirector** to stop the TestDirector server. Choose **Start TestDirector** to restart the TestDirector server.

Starting SiteScope

After you install SiteScope, you can begin using it from the TestDirector Site Administrator.

To start SiteScope:

- 1 In the TestDirector Options window or TestDirector Login window, click the **Site Administrator** link. Alternatively, choose **Start > Programs > TestDirector 8.0 > Site Administrator**. The Site Administrator Login window opens.
- 2 In the **Password** box, type your Site Administrator password and click **Login**. The Site Administrator opens.
- 3 Click the **SiteScope** tab.

- 4 For more information on SiteScope, click the **Help** button in the SiteScope tab to open the *SiteScope User Guide*.

Uninstalling SiteScope

Before you can install the current version of SiteScope, you must uninstall the previous version from your TestDirector server machine.

To uninstall SiteScope:

- 1 Choose **Start > Settings > Control Panel > Add/Remove Programs**.
- 2 Select **SiteScope** and follow the instructions on your screen.



Mercury Interactive Corporation

1325 Borregas Avenue
Sunnyvale, CA 94089 USA

Main Telephone: (408) 822-5200

Sales & Information: (800) TEST-911, (866) TOPAZ-4U

Customer Support: (877) TEST-HLP

Fax: (408) 822-5300

Home Page: www.mercuryinteractive.com

Customer Support: support.mercuryinteractive.com