

TestDirector

Cache Manager Add-in Guide

Version 8.0

TestDirector Cache Manager Add-in Guide, Version 8.0

This manual, and the accompanying software and other documentation, is protected by U.S. and international copyright laws, and may be used only in accordance with the accompanying license agreement. Features of the software, and of other products and services of Mercury Interactive Corporation, may be covered by one or more of the following patents: U.S. Patent Nos. 5,701,139; 5,657,438; 5,511,185; 5,870,559; 5,958,008; 5,974,572; 6,138,157; 6,144,962; 6,205,122; 6,237,006; 6,341,310; 6,360,332, 6,449,739; 6,470,383; 6,477,483; 6,549,944; 6,560,564; 6,564,342; 6,587,969; 6,631,408; 6,631,411; 6,633,912; 6,694,288; 6,738,813; 6,738,933 and 6,754,701. Other patents pending. All rights reserved.

Mercury, Mercury Interactive, the Mercury Interactive logo, LoadRunner, LoadRunner TestCenter, Mercury Business Process Testing, Mercury Quality Center, Quality Center, QuickTest Professional, SiteScope, SiteSeer, TestDirector, Topaz and WinRunner are trademarks or registered trademarks of Mercury Interactive Corporation or its subsidiaries, in the United States and/or other countries. The absence of a trademark from this list does not constitute a waiver of Mercury Interactive's intellectual property rights concerning that trademark.

All other company, brand and product names are registered trademarks or trademarks of their respective holders. Mercury Interactive Corporation disclaims any responsibility for specifying which marks are owned by which companies or which organizations.

Mercury Interactive Corporation
379 North Whisman Road
Mountain View, CA 94043
Tel: (650) 603-5200
Toll Free: (800) TEST-911
Customer Support: (877) TEST-HLP
Fax: (650) 603-5300

© 2004 Mercury Interactive Corporation, All rights reserved

If you have any comments or suggestions regarding this document, please send them via e-mail to documentation@mercury.com.

Table of Contents

Welcome to the TestDirector Cache Manager Add-in	v
Using This Guide	v
Documentation Updates	vi
Typographical Conventions.....	vi
Chapter 1: Installing the Cache Manager Add-in.....	1
Chapter 2: Managing the Cache.....	3

Welcome to the TestDirector Cache Manager Add-in

Welcome to the TestDirector Cache Manager add-in, enabling you to manage the size and location of the cache folder on your TestDirector client machine.

This add-in supports TestDirector 8.0 Standard and Enterprise Editions with QuickTest Professional 6.0 and 6.5.

Note: This guide explains how to use the Cache Manager add-in with TestDirector. For additional information on using TestDirector, refer to the *TestDirector User's Guide*.

Using This Guide

This guide contains two chapters:

Chapter 1 Installing the Cache Manager Add-in

Describes how to install the Cache Manager add-in.

Chapter 2 Managing the Cache

Describes how to use Cache Manager to customize the cache settings on your TestDirector client machine.

Documentation Updates

Mercury Interactive is continuously updating its product documentation with new information. You can download the latest version of this document from the Customer Support Web site (<http://support.mercuryinteractive.com>).

To download updated documentation:

- 1** In the Customer Support Web site, click the **Documentation** link.
- 2** Under **Select Product Name**, select TestDirector.

Note that if TestDirector does not appear in the list, you must add it to your customer profile. Click **My Account** to update your profile.

- 3** Click **Retrieve**. The Documentation page opens and lists the documentation available for the current release and for previous releases. If a document was recently updated, **Updated** appears next to the document name.
- 4** Click a document link to download the documentation.

Typographical Conventions

This book uses the following typographical conventions:

- | | |
|-------------------|--|
| 1, 2, 3 | Bold numbers indicate steps in a procedure. |
| ► | Bullets indicate options and features. |
| > | The greater than sign separates menu levels (for example, File > Open). |
| Stone Sans | The Stone Sans font indicates names of interface elements in a procedure that you perform actions upon (for example, “Click the Run button.”). |
| Bold | Bold text indicates function names. |
| <i>Italics</i> | <i>Italic</i> text indicates variable names, or introduces a new term. |
| Arial | The Arial font is used for examples and statements that are to be typed in literally. |

1

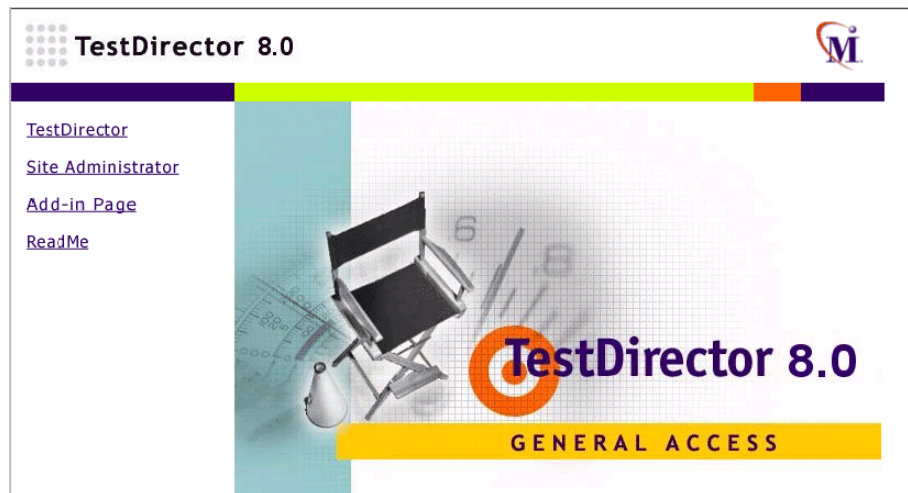
Installing the Cache Manager Add-in

This chapter describes how to install the Cache Manager add-in on your TestDirector client machine. Note that to install this add-in, you must log in with administrator privileges.

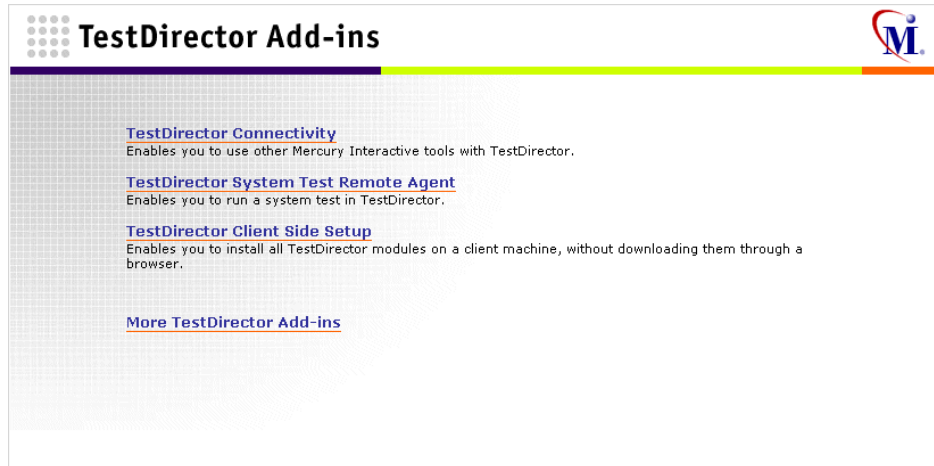
Note: You must install the TestDirector Cache Manager add-in on a machine which only has QuickTest Professional 6.0 or 6.5 installed. You should not have any other Mercury Interactive tools installed on this machine.

To install the Cache Manager add-in:

- 1 Open your Web browser and type your TestDirector URL:
`http://<TestDirector server name>/<virtual directory name>/default.htm`.
The TestDirector Options window opens.



- 2 Click the **Add-ins Page** link. The TestDirector Add-ins page opens.



- 3 Click the **More TestDirector Add-ins** link. The More TestDirector Add-ins page opens.
- 4 Under **Others**, click the **Cache Manager Add-in** link. The Cache Manager Add-in page opens.
- 5 Click the **Download Add-in** link to begin installing the Cache Manager add-in. Follow the on-screen installation instructions.

2

Managing the Cache

The Cache Manager add-in enables you to customize the cache settings on your TestDirector client machine. You can set the cache folder location, folder size, and the clean up period. You can also view and delete files.

After you set the cache options and enable cache management on your machine, each time system memory becomes scarce, the Cache Manager automatically cleans up test and attachment folders to free up disk space.

The Cache Manager automatically cleans up your cache folder when all of the following conditions are met:

- ▶ QuickTest Professional test and/or attachment folders are downloaded to your cache folder.
- ▶ The time elapsed since the last clean up period is equal to or greater than the cache clean up period.
- ▶ The cache folder total size is greater than the specified disk space capacity.

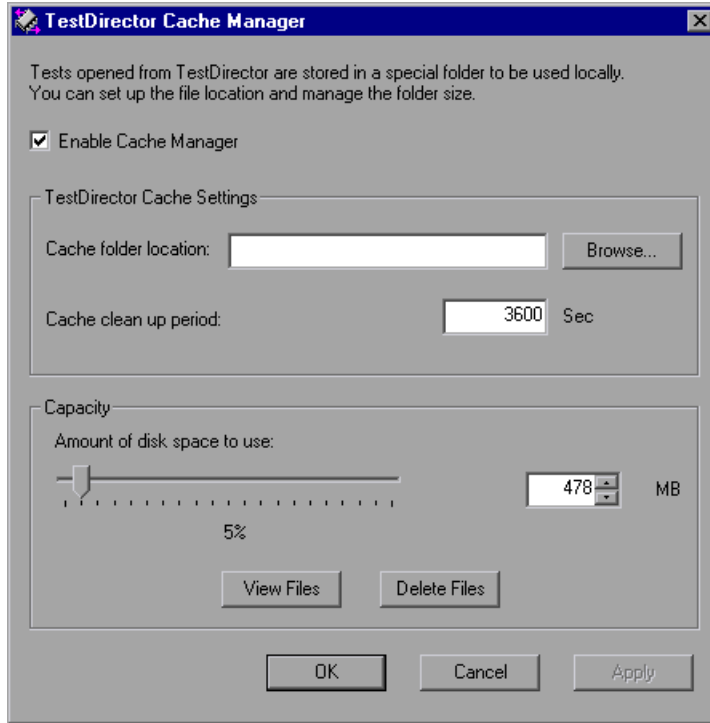
Before the cleanup process starts, the Cache Manager sorts the cache folder by last access time. If the cache folder total size is greater than the specified disk space capacity, the Cache Manager starts deleting from the least recently accessed folder. When the cache folder total size is less than or is equal to the specified disk space capacity, the deletion process stops.

Note: Cache Manager does not delete the following folders:

- ▶ The three most recently accessed QuickTest Professional test folders.
 - ▶ Attachment folders that are less than one-week old.
-

To manage the cache:

- 1** Choose **Start > Settings > Control Panel > Cache Manager**. The TestDirector Cache Manager dialog box opens.



- 2** To enable cache management of your TestDirector folders, select **Enable Cache Manager**.
- 3** In the **Cache folder location** box, type the location or click **Browse** to change the location. You must specify the cache folder location as an absolute path.

Note: The name of the cache folder may not include the following characters: () | / \ " : ? < >

Note: For the new cache folder location to take affect, you must:

- ▶ Open QuickTest Professional. Disconnect the TestDirector server connection and then reconnect.
- ▶ Log off from TestDirector and then log on again.

For more information on connecting to and disconnecting from TestDirector, refer to the *QuickTest Professional User's Guide*.

- 4** In the **Cache clean up period** box, type the minimum interval (in seconds) that TestDirector waits to perform clean ups between operations.
- 5** In the **Capacity** section, move the slider to set the maximum size of your cache folder in megabytes. Alternatively, you can type or select the maximum size.

Note: If you set the size of your cache folder to be less than 50 MB, Cache Manager is disabled.

- 6** To view the files in your cache folder, click **View Files**.
- 7** To manually delete all files from your cache folder, click **Delete Files**. Click **Yes** to confirm. Note that it is recommended that you close all TestDirector tests before deleting the cache folder.
- 8** Click **OK** to save and close the TestDirector Cache Manager dialog box. TestDirector adds the cache settings to your registry and mercury.ini file.

