

# **TestDirector**

## Import Tests Add-in Guide

Version 8.0

## TestDirector Import Tests Add-in Guide, Version 8.0

This manual, and the accompanying software and other documentation, is protected by U.S. and international copyright laws, and may be used only in accordance with the accompanying license agreement. Features of the software, and of other products and services of Mercury Interactive Corporation, may be covered by one or more of the following patents: U.S. Patent Nos. 5,701,139; 5,657,438; 5,511,185; 5,870,559; 5,958,008; 5,974,572; 6,138,157; 6,144,962; 6,205,122; 6,237,006; 6,341,310; 6,360,332, 6,449,739; 6,470,383; 6,477,483; 6,549,944; 6,560,564; and 6,564,342. Other patents pending. All rights reserved.

ActiveTest, ActiveTune, Astra, FastTrack, Global SiteReliance, LoadRunner, Mercury, Mercury Interactive, the Mercury Interactive logo, Open Test Architecture, Optane, POPs on Demand, ProTune, QuickTest, RapidTest, SiteReliance, SiteRunner, SiteScope, SiteSeer, TestCenter, TestDirector, TestSuite, Topaz, Topaz AIMS, Topaz Business Process Monitor, Topaz Client Monitor, Topaz Console, Topaz Delta, Topaz Diagnostics, Topaz Global Monitor, Topaz Managed Services, Topaz Open DataSource, Topaz Real User Monitor, Topaz WeatherMap, TurboLoad, Twinlook, Visual Testing, Visual Web Display, WebTest, WebTrace, WinRunner and XRunner are trademarks or registered trademarks of Mercury Interactive Corporation or its wholly owned subsidiary Mercury Interactive (Israel) Ltd. in the United States and/or other countries.

All other company, brand and product names are registered trademarks or trademarks of their respective holders. Mercury Interactive Corporation disclaims any responsibility for specifying which marks are owned by which companies or which organizations.

Mercury Interactive Corporation  
1325 Borregas Avenue  
Sunnyvale, CA 94089 USA  
Tel: (408) 822-5200  
Toll Free: (800) TEST-911, (866) TOPAZ-4U  
Fax: (408) 822-5300

© 2004 Mercury Interactive Corporation, All rights reserved

If you have any comments or suggestions regarding this document, please send them via e-mail to [documentation@merc-int.com](mailto:documentation@merc-int.com).

---

# Table of Contents

<b>Welcome to the TestDirector Import Tests Add-in .....</b>	<b>v</b>
Using This Guide .....	vi
Documentation Updates .....	vi
Typographical Conventions.....	vii
<b>Chapter 1: Installing the Import Tests Add-in .....</b>	<b>1</b>
<b>Chapter 2: Importing Tests to TestDirector .....</b>	<b>5</b>



---

# Welcome to the TestDirector Import Tests Add-in

Welcome to the TestDirector Import Tests Add-in, which enables you to import the following tests to a TestDirector project: WinRunner, LoadRunner, QuickTest Professional, Astra QuickTest, and QuickTest Professional for MySAP.com Windows Client.

This add-in supports TestDirector 8.0 Standard and Enterprise Editions.

You can import tests using one of the following three methods:

- ▶ **Import:** Performs a file system import, copying the tests to the specified TestDirector project. This method can be used on the TestDirector server or client machine, and can only be used when importing tests located within the same LAN.
- ▶ **Upload:** Uploads the tests via HTTP to the specified TestDirector project. This method can be used on the TestDirector server or client machine, or remote Web clients (WAN). Note that the Upload method may be time-consuming due to network traffic.
- ▶ **Link:** Links the tests to the specified TestDirector project from their current location. This method can only be used on the TestDirector server machine, and when importing tests located within the same LAN.

---

**Known limitation using the Link method:** After importing, you may need to stop and restart your TestDirector server in order to view the test scripts. For more information, refer to TestDirector Knowledge Base Problem ID 30434.

---

**Note:** This guide explains how to use the Import Tests Add-in with TestDirector. For additional information on using TestDirector, refer to the *TestDirector User's Guide*.

---

## Using This Guide

This guide contains two chapters:

### Chapter 1 Installing the Import Tests Add-in

Describes how to install the Import Tests Add-in.

### Chapter 2 Importing Tests to TestDirector

Describes how to import tests to TestDirector.

## Documentation Updates

Mercury Interactive is continuously updating its product documentation with new information. You can download the latest version of this document from the Customer Support Web site (<http://support.mercuryinteractive.com>).

**To download updated documentation:**

- 1** In the Customer Support Web site, click the **Documentation** link.
- 2** Under **Select Product Name**, select TestDirector.

Note that if TestDirector does not appear in the list, you must add it to your customer profile. Click **My Account** to update your profile.

- 3** Click **Retrieve**. The Documentation page opens and lists the documentation available for the current release and for previous releases. If a document was recently updated, **Updated** appears next to the document name.
- 4** Click a document link to download the documentation.

## Typographical Conventions

This book uses the following typographical conventions:

<b>1, 2, 3</b>	Bold numbers indicate steps in a procedure.
►	Bullets indicate options and features.
>	The greater than sign separates menu levels (for example, <b>File &gt; Open</b> ).
<b>Stone Sans</b>	The <b>Stone Sans</b> font indicates names of interface elements in a procedure that you perform actions upon (for example, “Click the <b>Run</b> button.”).
<b>Bold</b>	<b>Bold</b> text indicates function names.
<i>Italics</i>	<i>Italic</i> text indicates variable names, or introduces a new term.
Arial	The Arial font is used for examples and statements that are to be typed in literally.



# 1

---

## Installing the Import Tests Add-in

To import automated tests to a TestDirector project, you must install the Import Tests Add-in. You can install the Import Tests Add-in on your TestDirector server or client machine. Note that to install this add-in, you must log in with administrator privileges.

---

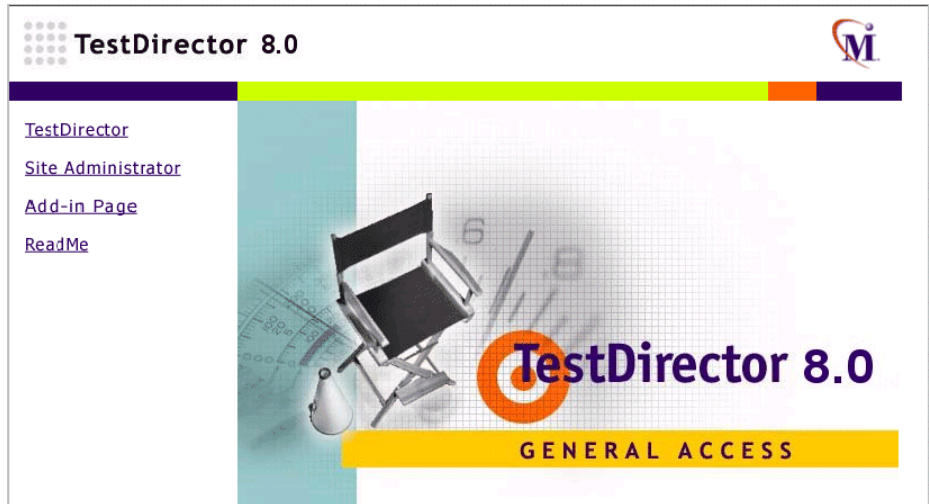
**Note:** You must also install the TestDirector Connectivity Add-in on your client machine. For more information, refer to the *TestDirector Installation Guide*.

---

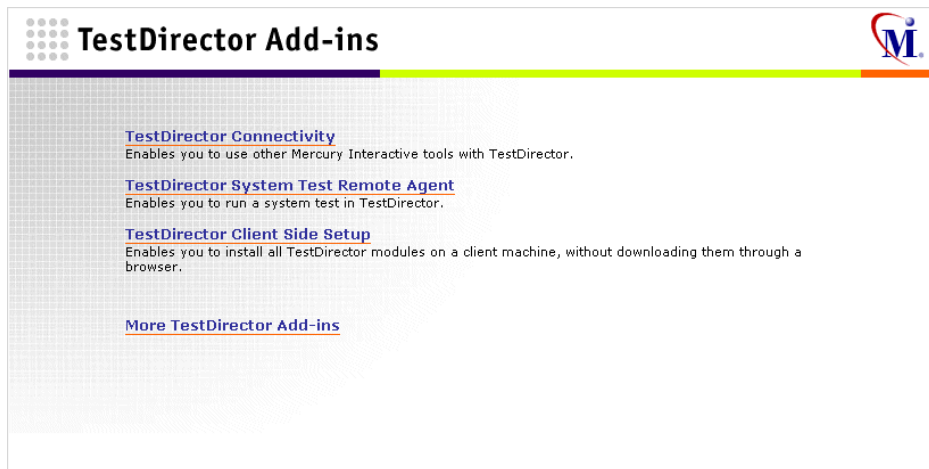
### To install the Import Tests Add-in:

- 1 If you have a previous version of the Import Tests Add-in installed on your machine, delete the import tests folder from your directory. By default, the folder is located in:  
[*your system drive*]:\Program Files\Common Files\Mercury Interactive

- 2 Open your Web browser and type your TestDirector URL:  
<http://<TestDirector server name>/<virtual directory name>/default.htm>.  
The TestDirector Options window opens.



- 3 Click the **Add-ins Page** link. The TestDirector Add-ins page opens.



- 4** Click the **More TestDirector Add-ins** link. The More TestDirector Add-ins page opens.
- 5** Under **Others**, click the **Import Tests Add-in** link. The Import Tests Add-in page opens.
- 6** Click the **Download Add-in** link. Follow the on-screen installation instructions.
- 7** If you are installing this add-in on a TestDirector client machine, navigate back to the TestDirector Add-ins page and click the **TestDirector Connectivity Add-in** link. In the TestDirector Connectivity Add-in page, click **Download Add-in** and install the Connectivity Add-in.



# 2

---

## Importing Tests to TestDirector

After you install the Import Tests Add-in, you can import WinRunner, LoadRunner, QuickTest Professional, Astra QuickTest, and QuickTest Professional for MySAP.com Windows Client tests to your TestDirector project. This enables you to view and run tests directly from TestDirector.

---

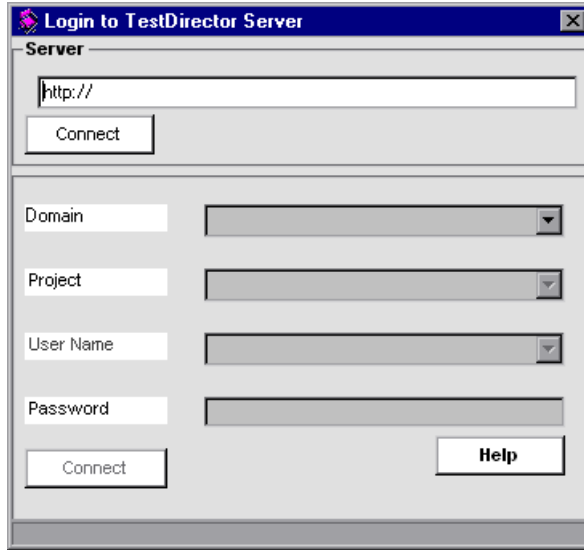
**Note for tests imported from QuickTest Professional 6.0 and later or Astra QuickTest 6.0:** In the Test Plan module, Test Script tab, TestDirector displays only the uppermost hierarchical levels of the test tree. When you run the test, however, the complete test is run.

**Workaround:** To view the complete test tree, launch the test once from TestDirector and save it in the launched application.

---

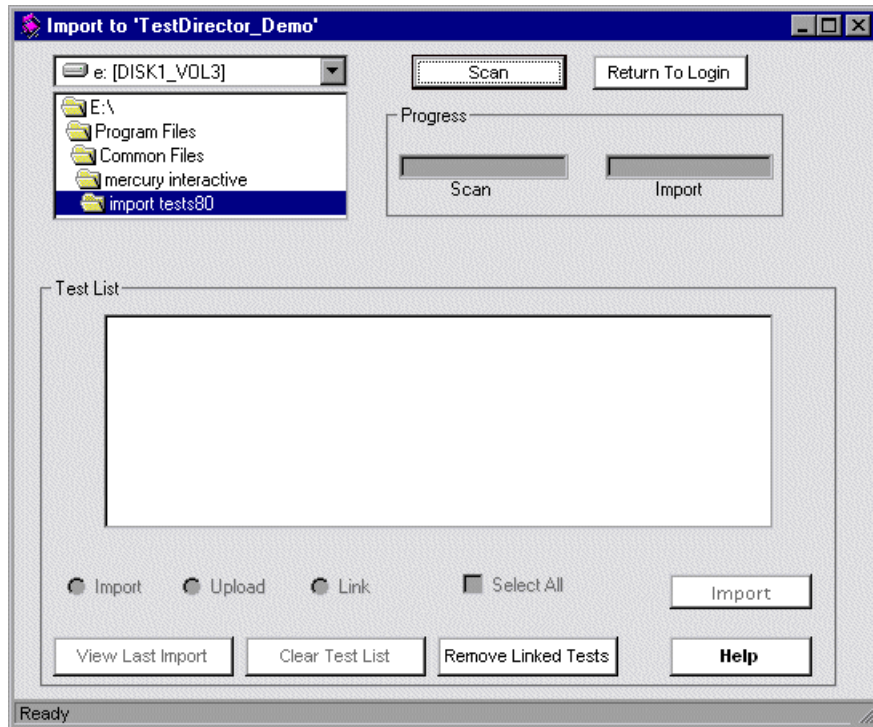
**To import tests to TestDirector:**

- 1** From the **Start** menu, choose **Import Tests 8.0**. The Login to TestDirector Server dialog box opens.

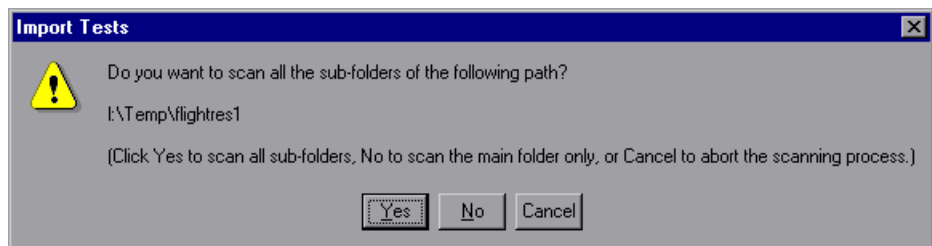


- 2** In the **Server** box, type the TestDirector server URL:  
*http://[server name]/[virtual directory name]*
- 3** Click **Connect**.
- 4** In the **Domain** box, select the domain to which you want to connect.
- 5** In the **Project** box, select the project to which you want to connect.
- 6** In the **User Name** box, select or type the user name for the project.
- 7** In the **Password** box, type the password for the project.

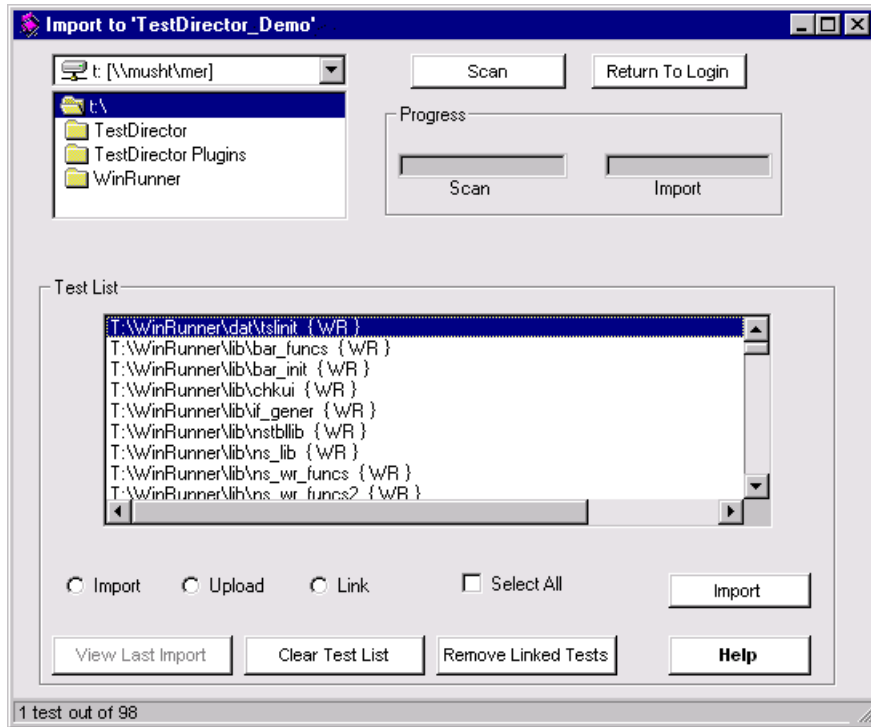
- 8 Click **Connect** to connect to the TestDirector project you selected. The Import to [Project] dialog box opens.



- 9 Select the directory path you want to scan for tests, and click the **Scan** button. The Import Tests message box opens.



- 10 Click **Yes** to scan all sub-folders of the path you selected. Click **No** to scan the main folder only. When the scan is complete, the results are displayed in the Test List box.



- 11 Under **Test List**, select a test(s) to import to TestDirector. To select all tests, select **Select All**.

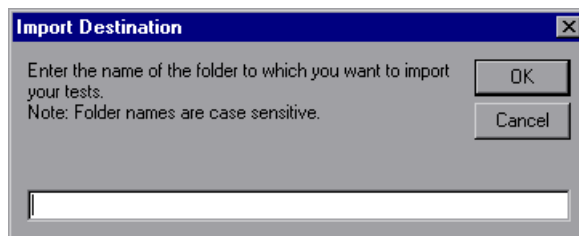
**12** Select an import option:

- **Import:** Performs a file system import, copying the tests to the specified TestDirector project. This method can be used on the TestDirector server or client machine, and can only be used when importing tests located within the same LAN.
- **Upload:** Uploads the tests via HTTP to the specified TestDirector project. This method can be used on the TestDirector server or client machine, or remote Web clients (WAN). Note that the Upload method may be time-consuming due to network traffic.
- **Link:** Links the tests to the specified TestDirector project from their current location. This method can only be used on the TestDirector server machine, and when importing tests located within the same LAN.

---

**Known limitation using the Link method:** After importing, you may need to stop and restart your TestDirector server in order to view the test scripts. For more information, refer to TestDirector Knowledge Base Problem ID 30434.

---

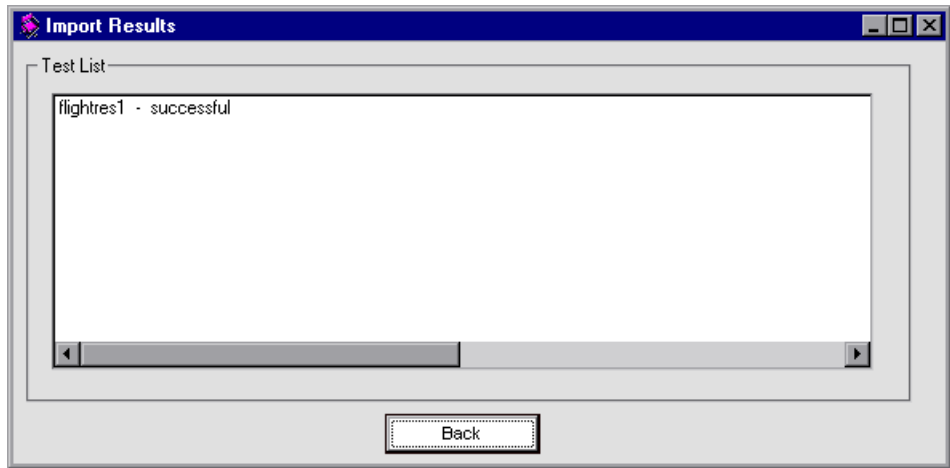
**13** Click **Import**. The Import Destination dialog box opens.**14** Type the test plan tree folder to which you want to import your test(s).

---

**Note:** If more than one folder with the name you specified is found in the test plan tree, you will be prompted to specify the full test plan tree path for the folder.

---

- 15 Click **OK**. The Import Results dialog box opens, displaying the import results.



- 16 Click **Back**. The Import to [Project] dialog box reopens. The import test process is complete.

- 17 You can select one of the following options:

- Click **View Last Import** to open the Import Results dialog box for the previous import command.
- Click **Clear Test List** to clear the list of tests that is displayed in the Test List box.
- Click **Remove Linked Tests** to remove linked tests from your project. The Remove Link dialog box opens. Select the linked tests that you want to remove from your project, and click **Remove Link**. The linked tests are deleted from your project, but not from the file system.

Note that you can use this option only if you import you test(s) using the Link option (see step 12 on page 9).

- 18 Click the **Close** button to close the Import to [Project] dialog box.





**Mercury Interactive Corporation**

1325 Borregas Avenue  
Sunnyvale, CA 94089 USA

**Main Telephone:** (408) 822-5200

**Sales & Information:** (800) TEST-911, (866) TOPAZ-4U

**Customer Support:** (877) TEST-HLP

**Fax:** (408) 822-5300

**Home Page:** [www.mercuryinteractive.com](http://www.mercuryinteractive.com)

**Customer Support:** [support.mercuryinteractive.com](http://support.mercuryinteractive.com)